

VCCA – ANURADHAPURA / Anuradhapura

VCCA AD 2.1 AERODROME LOCATION INDICATOR AND NAME:

1.	Location Name	Anuradhapura
2.	Name of Aerodrome	Anuradhapura
3.	ICAO Location Indicator	VCCA

VCCA AD 2.2 AERODROME GEOGRAPHICAL AND ADMINISTRATIVE DATA

1.	ARP co-ordinates and site at AD	081806.80N 0802543.60E
2.	Direction and distance from (city)	165°, 2.5 NM from Anuradhapura Town
3.	Elevation / Reference temperature	99M(325FT) / 31.3°C
4.	MAG VAR	2° W (2017)
5.	AD Administration, address, telephone, telefax, AFS	Sri Lanka Air Force Headquarters P.O. Box: 594, Colombo, Sri Lanka. Tel: +94-11-2441044 Tele Fax: +94-11-2343969 Telex : 21721 COMMAIR CE
6.	Types of traffic permitted (IFR/VFR)	IFR / VFR
7.	Remarks	Detailed information on Anuradhapura aerodrome may be obtained from SLAF H/Q

VCCA AD 2.3 OPERATIONAL HOURS

1.	Aerodrome Administration	HO
2.	Air Traffic Services	HO
3.	Remarks	Military operations only. PPR for other traffic

VCCA AD 2.12 RUNWAY PHYSICAL CHARACTERISTICS

Designation RWY NR.	TRUE & MAG BRG	Dimensions of RWY (M)	Strength (PCN) and surface of RWY and SWY	THR Co-ordinates	THR elevation and highest elevation of TDZ of Precision Approach RWY
1	2	3	4	5	6
05		1630 X 46	PCN 16/F/D/Y/T	081748.46N 0802524.30E(*)	THR ELEV 96.8M
23		1630 X 46		081825.15N 0802602.80E(*)	THR ELEV 93.0M

VCCA AD 2.14 APPROACH AND RWY LIGHTING

RWY LGT – Electric flare path

VCCA AD 2.17 ATS AIRSPACE

1.	Designation and lateral limits	ANURADHAPURA CTR A circle of radius 10NM centered 081800N 0802500E
2.	Vertical Limits	SFC to 3500FT ALT
3.	Airspace Classification	D
4.	ATS Unit Call sign Language(s)	Anuradhapura Tower English
5.	Transition Altitude	11000FT (3350m)
6.	Remarks.	Controlling authority: SLAF
1.	Designation and lateral limits	ANURADHAPURA CTA A circle of radius 20NM centered 081800N 0802500E
2.	Vertical Limits	2500FT ALT to 9500FT ALT
3.	Airspace Classification	D
4.	ATS Unit Call sign Language(s)	Anuradhapura Approach English
5.	Transition Altitude	11000FT (3350m)
6.	Remarks.	SLAF Local Flying, Controlling authority: SLAF

VCCA AD 2.18 ATS COMMUNICATION FACILITIES

Service Designation	Call Sign	Frequency	Hours of Operation	Remarks
1	2	3	4	5
APP	Anuradhapura Approach	126.7MHz	HO	Controlling Authority: SLAF
TWR	Anuradhapura Tower	120.5MHz 126.7MHz	HO	
DDF	Anuradhapura Homer	120.5MHz 126.7MHz	HO	

VCCA AD 2.19 RADIO NAVIGATION AND LANDING AIDS

Type of Aid and variation	ID	Frequency / CH	Hours of Operation	Site of Transmitting Antenna Co-ordinates	DME Transmission Antenna Elevation / Remarks
1	2	3	4	5	6 & 7
NDB	AN	415KHz	H24	081835.4N 0802616.2E (*)	Controlling Authority: SLAF 100W

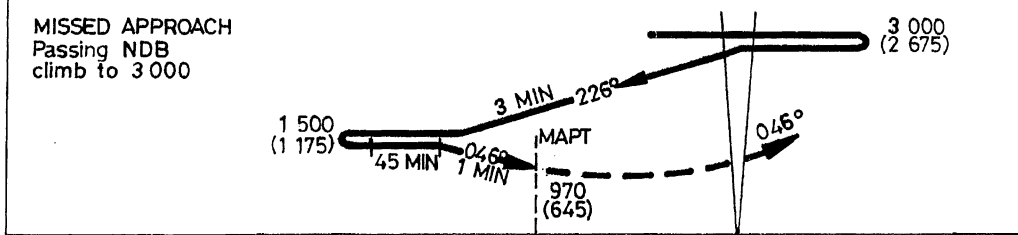
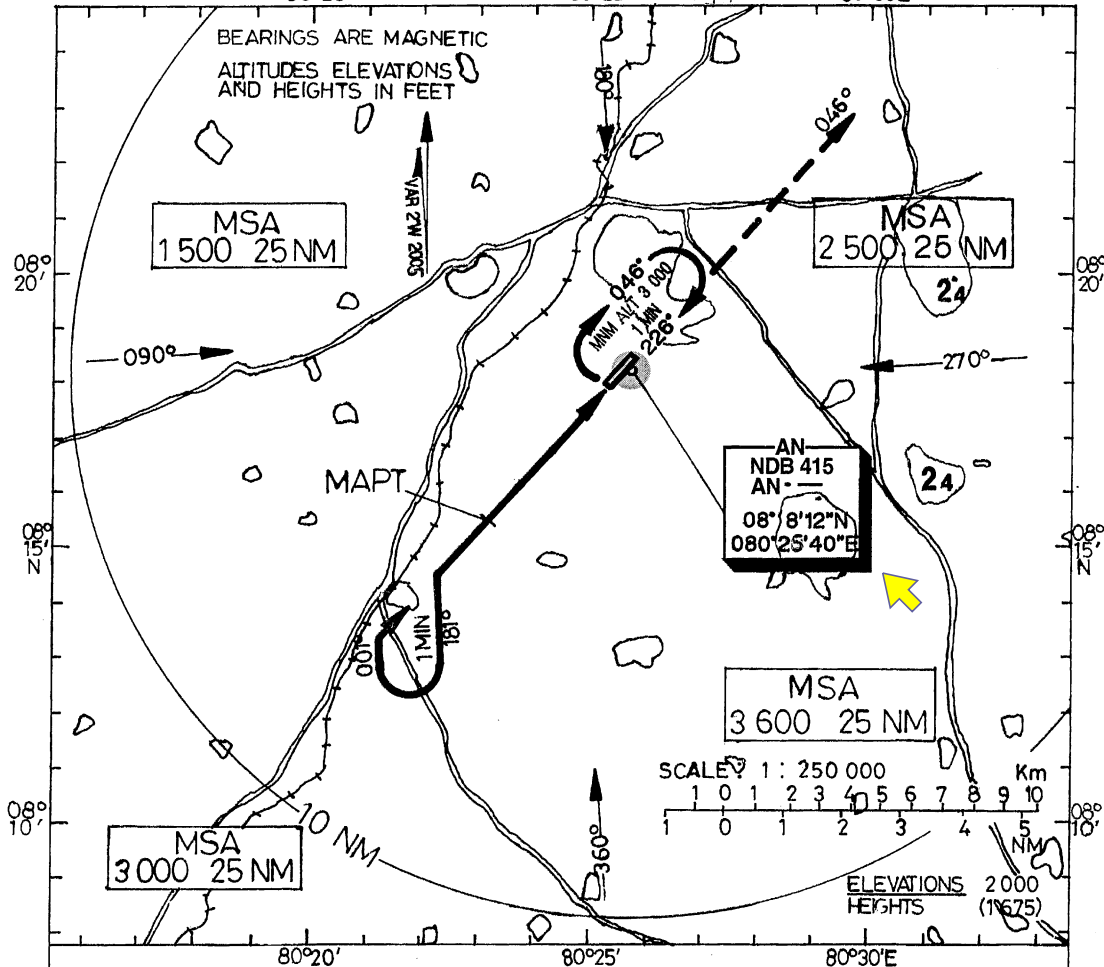
VCCA AD 2.24 CHARTS RELATED TO ANURADHAPURA AERODROME**Chart Name**Instrument Approach Chart - ICAO – NDB RWY 05
Instrument Approach Chart - ICAO – NDB RWY 23**Page**VCCA AD 2-5
VCCA AD 2-7

(*) WGS 84 Co-ordinates.

INSTRUMENT APPROACH CHART-ICAO
AERODROME ELEVATION 325 FT
HEIGHTS RELATED TO AERODROME ELEV 80°20'

APP 126.7
TWR 120.5

ANURADHAPURA
NDB
RWY 05



10 9 8 7 6 5 4 3 2 1 0 1 2 3 4 5
NM FROM THR RWY 05

OCA/H	
Straight-in-Approach	970(645)
Circling	

Speed	kt	70	90	100	120	150	180
Rate of descent	ft/min	369	474	527	632	790	949

